

State of Wyoming Corner Record

(In compliance with the *CORNER PERPETUATION AND FILING ACT*, Wyoming Statutes, 1997 Section 33-29-140 et. seq., and the Rules and Regulations of the Board of Professional Engineers and Professional Land Surveyors)

Reverse side of this form may be used if more space is needed.

Record of original survey and citation of source of historical information (if corner is lost or obliterated). Description of corner monumentation evidence found and/or monument and accessories established to perpetuate the location of this corner. Sketch of relative location of monument, accessories, and reference points with course and distance to adjacent corner(s) (if determined in this survey). Method and rationale for reestablishment of lost or obliterated corner.

NW CORNER, SECTION 8, T.12N., R.66W., 6TH P.M., LARAMIE COUNTY, WYOMING

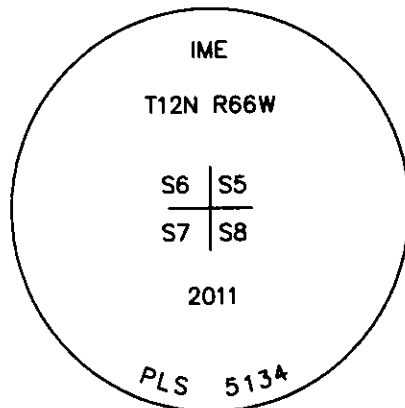
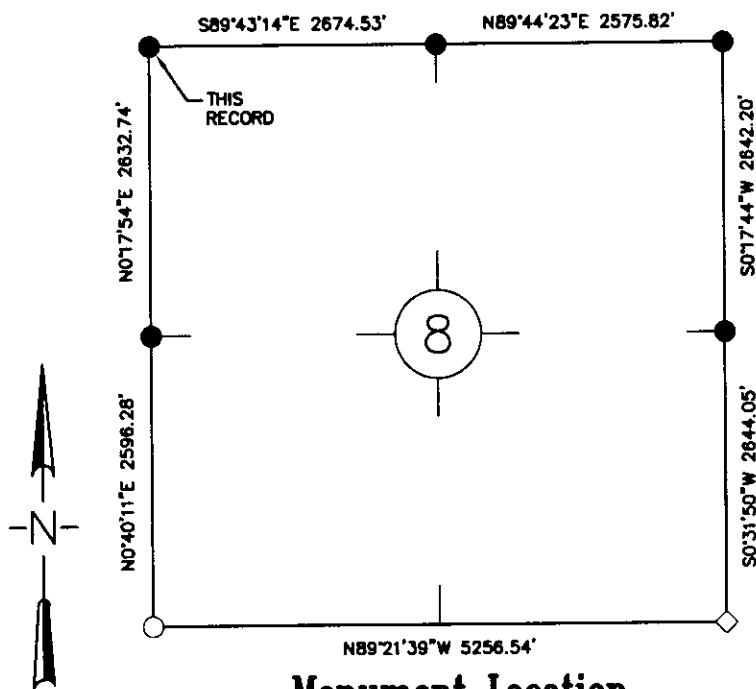
LEGEND

FOUND: LOOSE STONE 10"x4"x6" WITH 5 SCRIBED MARKS.

SET: REPLACED STONE WITH 5/8"X24" REBAR WITH 2 1/2" ALUMINUM CAP; NAIL AND SHINER IN EAST POWER POLE IS 65.8' SOUTHWEST FROM CAP; NAIL AND SHINER IN TOP OF 3' HIGH FENCE POST IS 34.8' SOUTHEAST FROM CAP. BURIED STONE ON SOUTH SIDE OF MONUMENT.

Note: Bearings and distances are relative to NAD 1983 Wyoming State Plane East Zone. Distances shown are ground.

- ⊙ FOUND BRASS CAP
- FOUND ALUMINUM CAP
- ◇ FOUND STONE
- SET 2 1/2" ALUMINUM CAP ON 5/8" X 24" REBAR STAMPED IME PLS 5134.



Monument Inscription

Monument Location

Date of Field Work: 1/26/2011 Office Reference: Book: 1100 Page: 38 15265-RS (Pt. #213)
 Office Reference: Book: 1104 Page: 52 15265-RS (Pt. #8707)

Cross Index Plat

	1	2	3	4	5	6	7	8	9	10	11	12	13	14	15	16	17	18	19	20	21	22	23	24	25
A																									
B																									
C																									
D																									
E																									
F																									
G																									
H																									
J																									
K																									
L																									
M																									
N																									
O																									
P																									
Q																									
R																									
S																									
T																									
U																									
V																									
W																									
X																									
Y																									
Z																									
	1	2	3	4	5	6	7	8	9	10	11	12	13	14	15	16	17	18	19	20	21	22	23	24	25

Firm/Agency, Address

Inberg-Miller Engineers
124 East Main Street
Riverton, WY 82501

This corner record was prepared by me or under my direction and supervision.

SEAL & SIGNATURE

Telephone Number: 307-856-8136

Randall S. Stebbins
 4/15/11

RECORDED 4/19/2011 AT 8:26 AM REC# 567029 BK# 2216 PG# 909
 DEBRA K. LATHROP, CLERK OF LARAMIE COUNTY, WY PAGE 1 OF 1

Corner Name NW Corner Section 8, T 12 N, R 66 W, 6th P.M. Cross-Index No.: E-5
 County: Laramie, Wyoming